



Beta



FIT4YOU

SOFT

MEDIUM

HARD

FitEvolution

..... New line 2024

Promotion valid from **02/09/2024** to **28/02/2025**



FIT 4 YOU: INNOVATION AND CUSTOMIZED COMFORT FOR SAFETY FOOTWEAR



THE FIT 4 YOU TECHNOLOGY IS THE RESULT OF AN AMBITIOUS CHALLENGE: OFFERING WORKERS A UNIQUE OPPORTUNITY

TO CUSTOMIZE COMFORT IN THEIR SAFETY FOOTWEAR.

FIT 4 YOU is a game changer in the safety footwear industry, as it matches safety with customized comfort in one innovative solution.

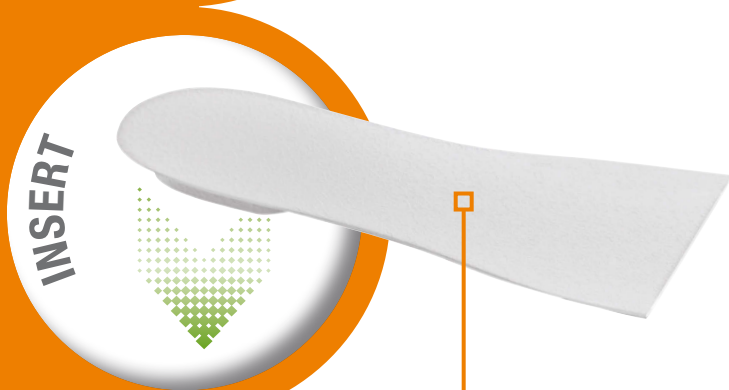
SEVERAL YEARS OF RESEARCH AND DEVELOPMENT

After several years of painstaking studying and designing, we developed the patented system, FIT 4 YOU. This state-of-the-art penetration-proof insole pressing process allows three different ETPU inserts – each with different densities – to be combined, to provide three levels of comfort, thus satisfying every user's requirements.



UNDERFOOT COVER

The removable, anatomically shaped underfoot cover, placed on the ETPU insert, provides improved protection and durability for ETPU. As the insert is located inside, it is protected from both external agents and wear, while maintaining its properties over time.

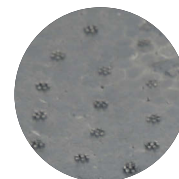


ETPU INSERTS

ETPU is the core of the FIT 4 YOU system, ensuring a cushioning effect and energy return. Based on three provided inserts varying in density and colour, it allows both softness and support to be customized in the shoe, according to weight, height and personal requirements. This groundbreaking technology ensures optimal comfort while moving as well as during static breaks, thereby resulting in reduced joint stress and fatigue.



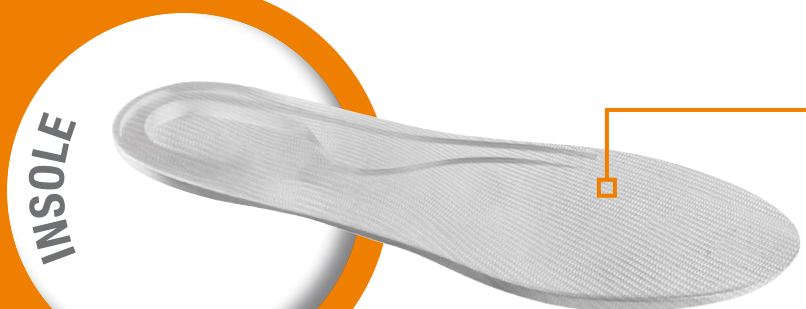
SOFT



MEDIUM



HARD



PENETRATION-PROOF INSOLE MADE FROM FABRIC

The FIT 4 YOU technology relies on an exclusive, patented pressing system, to form a special cavity in the penetration-proof insole, allowing ETPU to be added, without affecting the performance and penetration protection of the insole.

FitEvolution



DISCOVER THE NEW RANGE OF SAFETY FOOTWEAR

Seven uniquely designed models, available in several colours and materials, ranging from mesh to microfibre, to satisfy the most demanding users' requirements.



CUSTOMIZED COMFORT

The FIT 4 YOU technology can be relied on to customize both comfort and support in the footwear. **The product comes with three inserts** varying in density and colour, thereby allowing **comfort to be adjusted** according to weight, height and personal requirements.

FOOT WELLNESS

Shoe width 11 has been designed to provide the foot with an optimal amount of space, thereby ensuring improved comfort in the footwear.

INNOVATIVE DESIGN

Refined stylistic details and captivating colours allow this range to stand out as **a real "Evolution"** in the professional footwear world.

100% METAL FREE

The composite toe cap and insole match safety, lightness and flexibility, for improved comfort.

PROTECTION AND GRIP

The dual-density polyurethane outsole ensures stability, protection and slip resistance, thereby translating into **safety step after step**.



7272V

**FitEvolution MESH FABRIC SHOE,
HIGHLY BREATHABLE,
WITH PATENTED FIT 4 YOU
SHOE CUSTOMIZATION SYSTEM.**

- ▶ **UPPER**
Highly breathable mesh fabric
with TPU (thermoplastic polyurethane) inserts
- ▶ **OUTSOLE**
Dual-density polyurethane
- ▶ **TOE CAP**
Polymer material, 200 joules
- ▶ **PENETRATION-PROOF**
Composite fibre, ceramic treatment
- ▶ **UNDERFOOT COVER**
EVA FOAM
- ▶ **INSERT**
3-density cushioning
ETPU insert - FIT 4 YOU
- ▶ **LACING**
Traditional
- ▶ **WEIGHT**
550 g



Fit4YOU

EU 37÷48 / UK 4.5÷13
☎ 072720137 ÷ 072720148

S1 PS FO SR ESD



**EN ISO
20345
2022**



7270Y



FitEvolution MESH FABRIC SHOE,
HIGHLY BREATHABLE,
WITH PATENTED FIT 4 YOU
SHOE CUSTOMIZATION SYSTEM.

UPPER

Highly breathable mesh fabric
with TPU (thermoplastic polyurethane) inserts

OUTSOLE

Dual-density polyurethane

TOE CAP

Polymer material,
200 joules

PENETRATION-PROOF

Composite fibre, ceramic treatment

UNDERFOOT COVER

EVA FOAM

INSERT

3-density cushioning
ETPU insert - FIT 4 YOU

LACING

Traditional

WEIGHT

550 g

FIT4YOU

S1 PS FO SR ESD



EN ISO
20345
2022



EU 37÷48 / UK 4.5÷13
072700137 ÷ 072700148

FitEvolution SUEDE SHOE, PERFORATED,
WITH PATENTED FIT 4 YOU
SHOE CUSTOMIZATION SYSTEM.

UPPER

Perforated suede

OUTSOLE

Dual-density polyurethane

TOE CAP

Polymer material,
200 joules

PENETRATION-PROOF

Composite fibre, ceramic treatment

UNDERFOOT COVER

EVA FOAM

INSERT

3-density cushioning
ETPU insert - FIT 4 YOU

LACING

Traditional

WEIGHT

550 g

7271V



FIT4YOU

EU 37÷48 / UK 4.5÷13

072710137 ÷ 072710148

S1 PS FO SR ESD



EN ISO
20345
2022



7273G

FitEvolution NUBUCK SHOE, WATER-REPELLENT,
WITH PATENTED FIT 4 YOU
SHOE CUSTOMIZATION SYSTEM.

► **UPPER**

Water-repellent nubuck

► **OUTSOLE**

Dual-density polyurethane

► **TOE CAP**

Polymer material, 200 joules

► **PENETRATION-PROOF**

Composite fibre, ceramic treatment

► **UNDERFOOT COVER**

EVA FOAM

► **INSERT**

3-density cushioning
ETPU insert - FIT 4 YOU

► **LACING**

Traditional

► **WEIGHT**

600 g



FIT4YOU

EU 37÷48 / UK 4.5÷13

072730137 ÷ 072730148

S3 S FO SR ESD



FitEvolution NUBUCK ANKLE SHOE, WATER-REPELLENT,
WITH PATENTED FIT 4 YOU
SHOE CUSTOMIZATION SYSTEM.

► **UPPER**

Water-repellent nubuck

► **OUTSOLE**

Dual-density polyurethane

► **TOE CAP**

Polymer material, 200 joules

► **PENETRATION-PROOF**

Composite fibre, ceramic treatment

► **UNDERFOOT COVER**

EVA FOAM

► **INSERT**

3-density cushioning
ETPU insert - FIT 4 YOU

► **LACING**

Traditional

► **WEIGHT**

650 g



FIT4YOU

EU 37÷48 / UK 4.5÷13

072740237 ÷ 072740248

S3 S FO SR ESD



7274G



7275N

FitEvolution MICROFIBRE SHOE, WATER-REPELLENT,
WITH PATENTED FIT 4 YOU
SHOE CUSTOMIZATION SYSTEM.



- UPPER ◀
Water-repellent microfibre
- OUTSOLE ◀
Dual-density polyurethane
- TOE CAP ◀
Polymer material, 200 joules
- PENETRATION-PROOF ◀
Composite fibre, ceramic treatment
- UNDERFOOT COVER ◀
EVA FOAM
- INSERT ◀
3-density cushioning
ETPU insert - FIT 4 YOU
- LACING ◀
Traditional
- WEIGHT ◀
600 g



S3 S FO SR ESD



EU 37÷48 / UK 4.5÷13
072750237 ÷ 072750248



FitEvolution MICROFIBRE ANKLE SHOE, WATER-REPELLENT,
WITH PATENTED FIT 4 YOU
SHOE CUSTOMIZATION SYSTEM.

7276N

- ▶ UPPER
Water-repellent microfibre
- ▶ OUTSOLE
Dual-density polyurethane
- ▶ TOE CAP
Polymer material, 200 joules
- ▶ PENETRATION-PROOF
Composite fibre, ceramic treatment
- ▶ UNDERFOOT COVER
EVA FOAM
- ▶ INSERT
3-density cushioning
ETPU insert - FIT 4 YOU
- ▶ LACING
Traditional
- ▶ WEIGHT
650 g

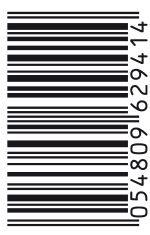


EU 37÷48 / UK 4.5÷13
072760237 ÷ 072760248

S3 S FO SR ESD



099804765



8 054809 6294 14

Beta



FOLLOW US



Beta Utensili S.p.A. | via Volta, 18 | 20845 Sovico (MB) | tel +39 039 20771

www.beta-tools.com

Promotion valid from **02/09/2024** to **28/02/2025**

The images are for reference only. Beta Utensili S.p.A. reserves the right to update and upgrade its product range without notice.