







**TABELLA TECNICA
CHIAVETTA TIRAFILI AGRICOLTURA ART. 8515CH**

Indicazioni di smaltimento imballaggi		
Simbolo		Indicazioni raccolta
		
		Raccolta plastica: buste di plastica, bottiglie di plastica, flaconi ecc...
		Raccolta carta: cartone ondulato (scatole imballaggio)
Verifica le disposizioni del tuo comune		

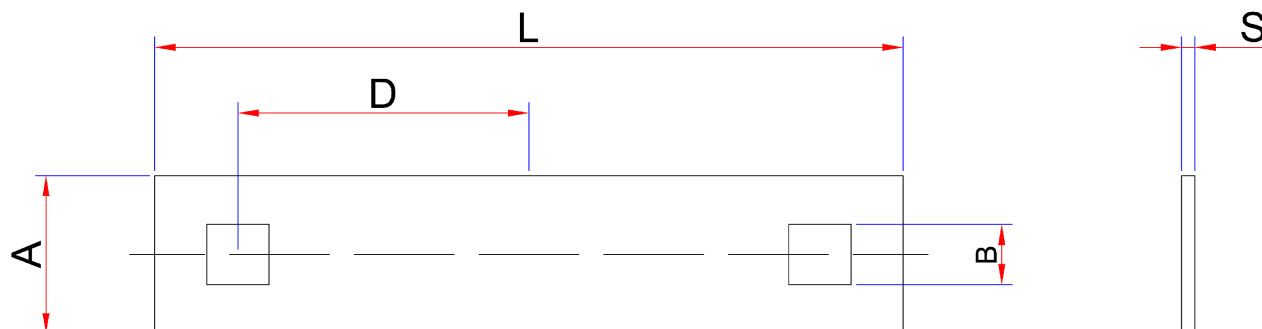
- 1) Acciaio impiegato: S235JR UNI EN 10025-2
- 2) Trattamento Superficiale: A2E UNI EN ISO 4042
- 3) Il collaudo viene eseguito in base a specifiche e regole interne in riferimento alla norma UNI EN ISO 9001.

4) Istruzioni Operative:

- L'articolo non deve essere utilizzato nel caso di usura o presenza di eventuali cricche.
- I dati indicati si riferiscono all'utilizzo del prodotto a temperatura ambiente
- Ispezionare sempre il prodotto prima dell'utilizzo.

5) Marcatura: /**ATTENZIONE**







Questo documento è valido fino a che permangono inalterate le nostre condizioni tecniche di fornitura. Eventuali modifiche, lavorazioni, trattamenti successivi, ci esonerano da qualsiasi responsabilità.

**TABELLA TECNICA
CHIAVETTA TIRAFILI AGRICOLTURA ART. 8515CH**

Le quote indicate sono espresse in mm.

A	D	L	B	S	CODICE
19	35	90	7,5	1,6	085150901

**TECHNICAL TABLE
WIRE TENDER KEYS ITEM 8515CH**

Disposal packaging instruction		
Simbology		Collection indication
		
		Plastic collection: plastic bags, plastic bottle, vials etc..
		Paper collection: corrugated cardboard (packaging boxes)
Check the provisions of your country.		

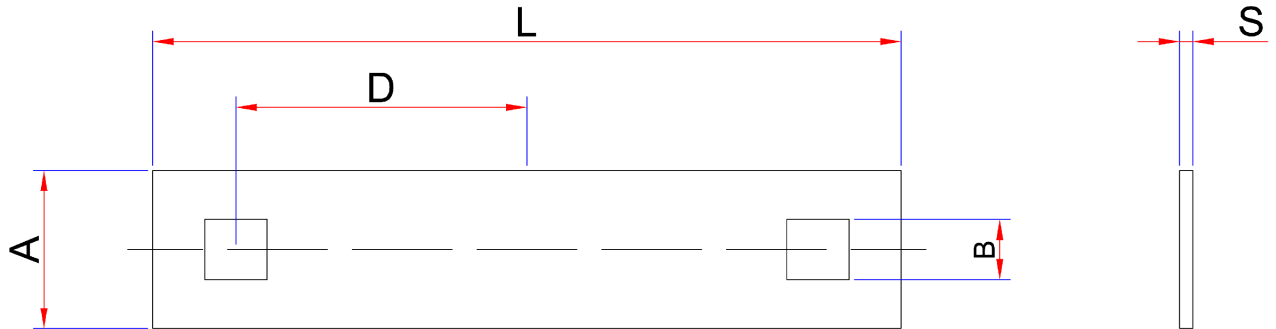
- 1) Steel type used: S235JR UNI EN 10025-2
- 2) Surface treatment: A2E UNI EN ISO 4042
- 3) The inspection is performed in accordance with specifications and in-house regulations referring to the UNI EN ISO 9001 standard.
- 4) Operating instructions:
 - This item should not be used if it is worn or cracked.
 - The indicated data are referred to products used at environmental temperature.
 - Before using the product always check it
- 5) Marking: /

WARNING!

This document shall be valid until our technical terms and conditions are changed.
We shall not be liable for any subsequent modifications, working techniques and treatments.

For any controversy refer to technical table written in Italian.

QUALITY SERVICE

**TECHNICAL TABLE
WIRE TENDER KEYS ITEM 8515CH**

The dimensions are expressed in mm.

A	D	L	B	S	CODE
19	35	90	7,5	1,6	085150901

QUALITY SERVICE